

E



TG/61/7 Rev. 2 Corr.

ORIGINAL: English

DATE: 2007-03-28 + 2014-04-09
+ 2015-03-25 + 2016-08-11

INTERNATIONAL UNION FOR THE PROTECTION OF NEW VARIETIES OF PLANTS
GENEVA

CUCUMBER, GHERKIN
UPOV Code: CUCUM_SAT
Cucumis sativus L.

*

GUIDELINES
FOR THE CONDUCT OF TESTS
FOR DISTINCTNESS, UNIFORMITY AND STABILITY

Ad. 1: Cotyledon: bitterness

The bitterness of the cotyledon should be observed by tasting just before the development of the first true leaf.

Ad. 13: Plant: sex expression

| | | | |
|----------------|--|-----------------------------|---|
| monoecious | All the nodes on the plant have both male and female flowers, with more male than female flowers on each node. | Hokus | 1 |
| subgynoecious | All the nodes have female flowers, as well as a few male flowers. Under certain conditions (light, warmth, chemical treatment), none or very few male flowers will develop on the nodes. | Toska 70 | 2 |
| gynoecious | All the nodes have only female flowers. Under certain conditions (darkness, cold, chemical treatment), a few male flowers will develop. | Farbio, Sandra, Wilma | 3 |
| hermaphrodytic | All the nodes have hermaphroditic and male flowers | Sunsweet | 4 |

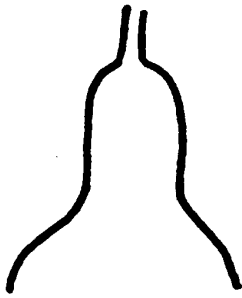
Ad. 15: Ovary: color of vestiture

The color of the vestiture should be observed before flower drop.

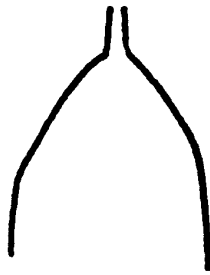
Ad. 16: Parthenocarpy

The development of the fruit without pollination should be observed under circumstances where pollination by insects (bees, bumblebees, etc.) is not possible; for example, in an insect-free greenhouse or at a time of the year when insects are not active.

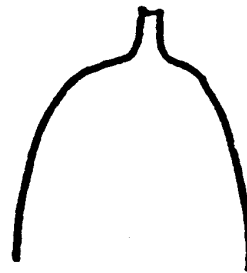
Ad. 22: Fruit: shape of stem end



1
necked



2
acute

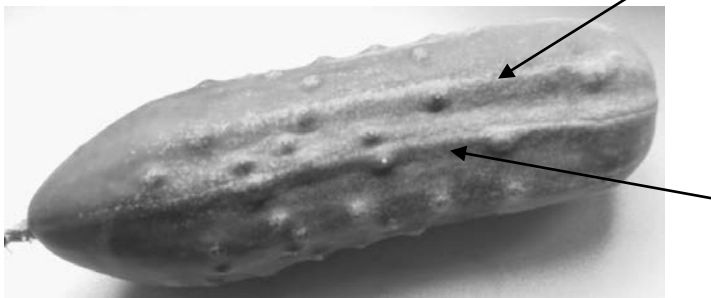


3
obtuse

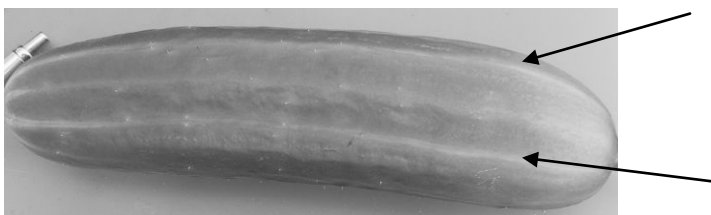
Ad. 25: Fruit: ground color of skin at market stage

Market stage is considered to be the stage when the fruits have reached their desired length in relation to the post-harvest use of the fruit (slicing, table cucumber, gherkin etc). Market stage is, in general, reached well before the physiological ripeness of the fruit (see Ad. 43).

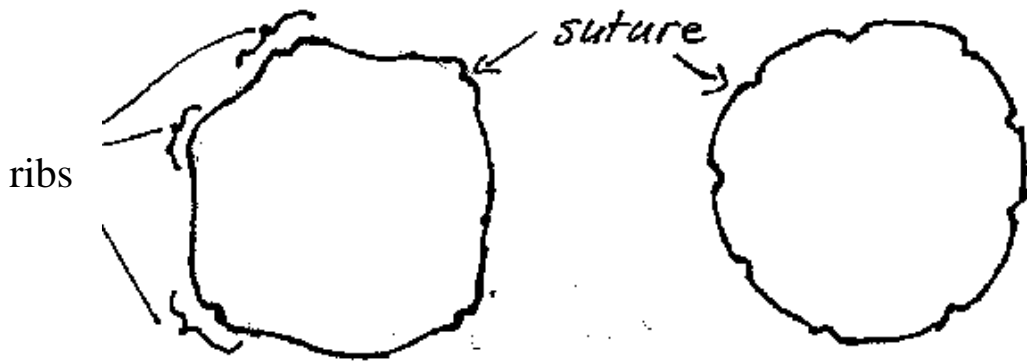
Ad. 27: Fruit: ribs



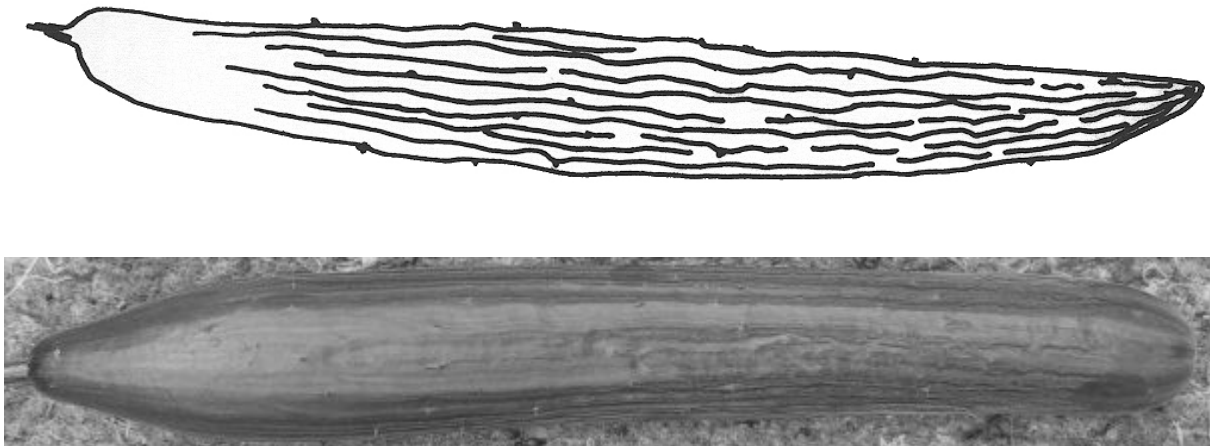
Ad. 28: Fruit: sutures



Sutures are slightly depressed in relation to the fruit surface.



Ad. 29: Fruit: creasing



Ad. 31: Fruit: type of vestiture



Ad. 43: Fruit: ground color of skin at physiological ripeness

The fruit is at physiological ripeness when it is fully developed and mature and there are no further changes to the color of the skin, before the fruit starts to rot.